

Exercises for beginners

Accompanying material for Lessons 3 - 5 of the course
"Alphorn - a modern introduction" on naturtoene.ch

Range C4 to G4



Range C4 to C5



2.1

2.2

2.3

2.4

2.5

2.6

2.7

2.8

2.9

2.10

Range C4 to E5



3.1

3.2

3.3

3.4

3.5

3.6


3.7

3.8

3.9


3.10

3.11



Musical notation for exercise 3.11, first system. It consists of a single staff in 4/4 time with a treble clef. The key signature has one flat (B-flat). The melody is composed of eighth and sixteenth notes, with some beamed sixteenth notes. The first measure contains a triplet of eighth notes. The piece ends with a double bar line.

3.12



Musical notation for exercise 3.12, first system. It consists of a single staff in 4/4 time with a treble clef. The key signature has one flat (B-flat). The melody is composed of eighth and sixteenth notes, with some beamed sixteenth notes. The first measure contains a triplet of eighth notes. The piece ends with a double bar line.



Musical notation for exercise 3.12, second system. It consists of a single staff in 4/4 time with a treble clef. The key signature has one flat (B-flat). The melody is composed of eighth and sixteenth notes, with some beamed sixteenth notes. The piece ends with a double bar line and a 4/4 time signature.

Range C4 to G5



4.1

4.2

4.3

4.4

4.5

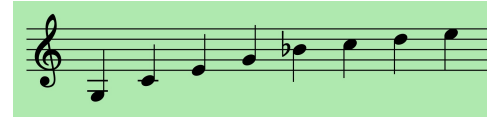
4.6

4.7

4.8



Range G3 to E5



5.1

5.2

5.3

5.4

5.5

5.6

5.7

5.8

5.9

Musical notation for exercise 5.9, consisting of two staves. The first staff contains six measures of music in 2/4 time, featuring eighth-note patterns with triplets. The second staff contains four measures, ending with a double bar line.

5.10

Musical notation for exercise 5.10, consisting of two staves. The first staff contains six measures of music in 3/4 time, featuring dotted eighth-note patterns. The second staff contains six measures, ending with a double bar line.

5.11

Musical notation for exercise 5.11, consisting of two staves. The first staff contains six measures of music in 2/4 time, featuring eighth-note patterns with triplets. The second staff contains four measures, ending with a double bar line.

Range G3 to G5



6.1

6.2

6.3

6.4

6.5

6.6

